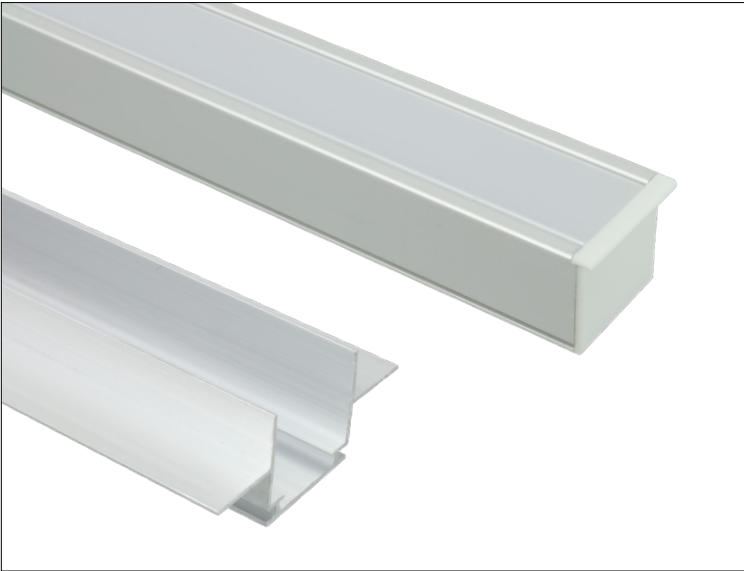


PROJECT:	TYPE:
LOCATION:	CAT:



### Description

The Mini Flange Slot is designed to be used with the Drywall Slot Housing to create sleek, finished 'Slot' fixtures in drywall and other flat surfaces during remodeling or new construction. 1/8" flanged edges on either side nearly disappear for a clean line-of-light look.

### Features

- Extruded aluminum construction
- Use tape light, lens, drywall slot housing, and end caps to create a complete fixture (tape light and accessories sold separately)
- Heavy-duty, frosted UV resistant/flame retardant lens (sold separately)
- IP20 standard fixture build
- Requires 1/2" or 5/8" Drywall Slot Housing for installation

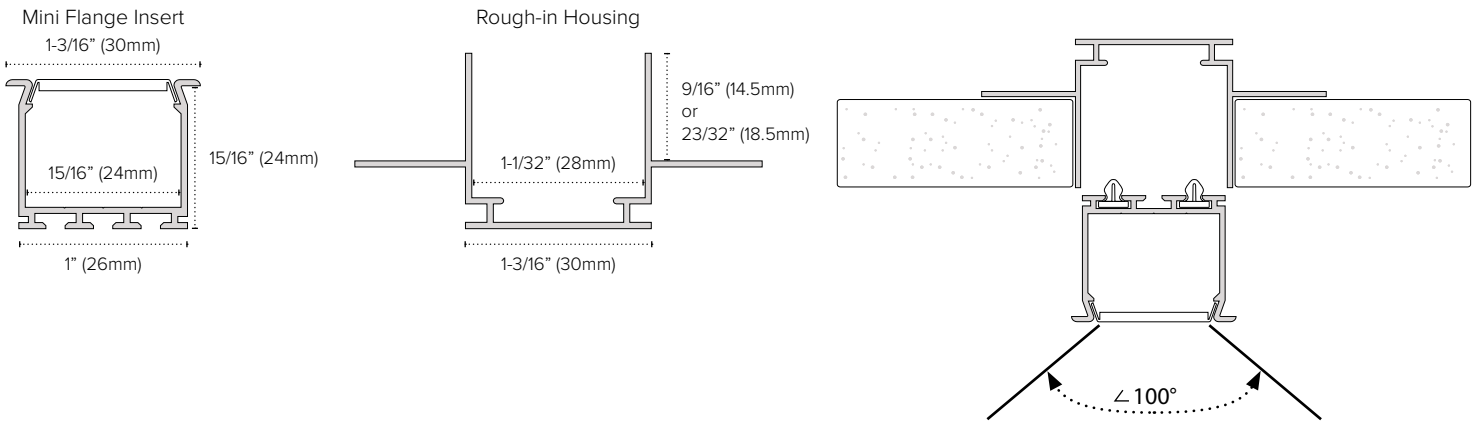
### Mounting

Two piece design: Install the "rough-in" Drywall Slot housing according to drywall thickness, then insert the Mini Flange Slot Extrusion using PE-SLOT-CLIPS after texturing and painting; Fits easily into 1/2" or 5/8" Drywall Slot Housings

### Applications

Lines of light across walls, ceilings, and other flat surfaces

## Technical Information



## Ordering Information

Part Number	Description
PE-D.5-2M	1/2" Drywall Rough-In Housing
PE-D.6-2M	5/8" Drywall Rough-In Housing
PE-SLOT-2M	Mini Flange Insert
PE-SLOTLENS-2M	Frosted Polycarbonate Lens For Mini Flange Slot Extrusion; Uv Resistant/Flame Retardant
PE-SLOT-END	Mini Flange Slot Polypropylene Plastic End Cap
PE-SLOT-CLIPS	Mini Flange Slot Clips (Required For Installation; Suggested 3 Pairs Per Meter)
PE-FC-END	Drywall Slot Extrusion Polypropylene Plastic End Cap