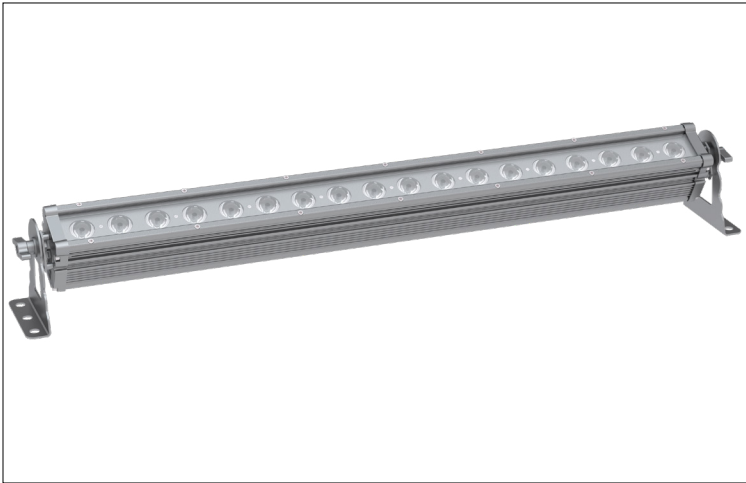


PROJECT:  TYPE:

LOCATION:  CAT:



Black Silver White  
Black and White finishes are available as special order only

**Description**

Heavy duty 3ft linear wall washer in 3000K, RGB, or RGBW

**Features**

- 1x18 LED pattern with long-life, low-maintenance LEDs (addressable as 3 sets of 6 LEDs)
- Quick-ship & special order options available (please allow 12-16 weeks for special order options)
- Durable die-cast aluminum housing with IP65 rating
- Single cable power and signal linking
- DMX 512 Data protocol
- RDM Required to address - fixtures are factory set to ID=001
- Adjustable angle design and easy installation maximizes on site flexibility
- Additional optics and visor options available (special order only)

**Mounting**

Attached mounting arm brackets

**Applications**

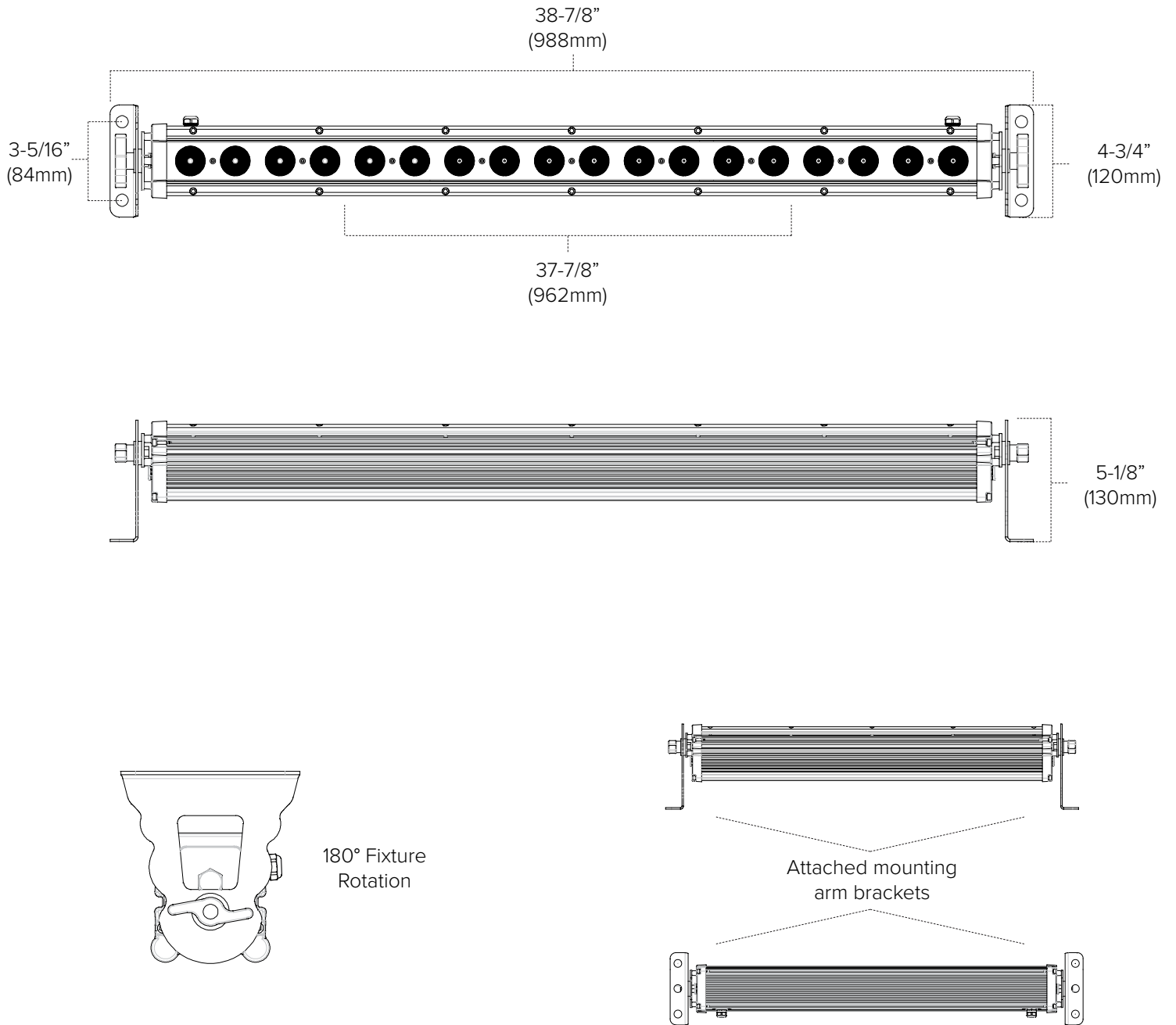
Commercial wall washing, entrance and facade lighting, seasonal & decorative displays, entertainment and event lighting, large scale and municipal installations, bridges and walkways



Technical Information

CCT	3000K	RGB	RGBW
Input Voltage Range	100-240V AC, 50/60Hz		
Max Power	72.5W	72.2W	71.7W
Power Factor	0.99	0.99	0.99
Input Current	0.75A	0.74A	0.74A
Drive Current	1.5A	0.5A	0.5A
Max Power Linking	12 units		
Max Signal Linking	30 units (use PZM-WW-SIGADPT-BK)		
Max Lumens	3100Lm	1900Lm	1900Lm
Dimming	0-100%		
Strobe	0-20Hz		
Data Protocol	DMX512; RDM Required for address		
DMX Channel	3 Channels (5 Channels for Strobe) 3 Sets of 6 LEDs	9 Channels (11 Channels for Strobe) 3 Sets of 6 LEDs	12 Channels (14 Channels for Strobe) 3 Sets of 6 LEDs
Optics	25° Standard		
Net Weight	5.46Kg (12.03Lbs)		
Working Temp	-20°C (-4°F) ~ 45° (113°F)		
IP Grade	IP65		
Safety Rating	cULus Listed; Wet locations		
Rated Life	50,000 Hours		

Physical Dimensions



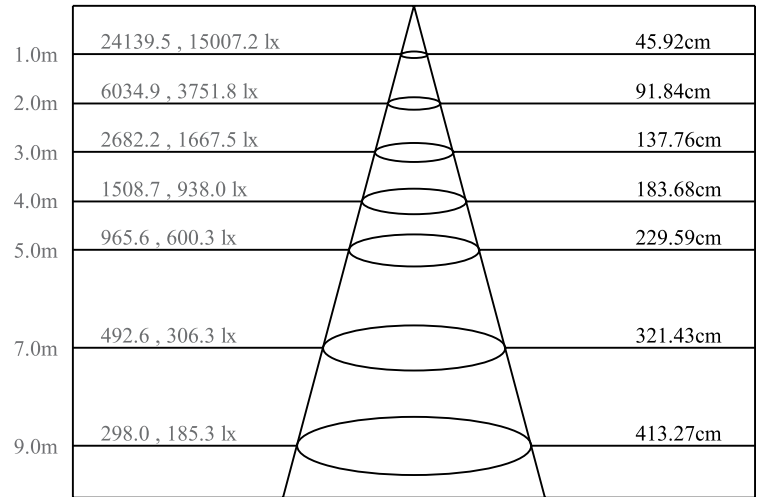
Photometrics

For additional photometric information and IES files, please visit [PrizmLighting.com](http://PrizmLighting.com)

ZONAL LUMEN SUMMARY (3000K)

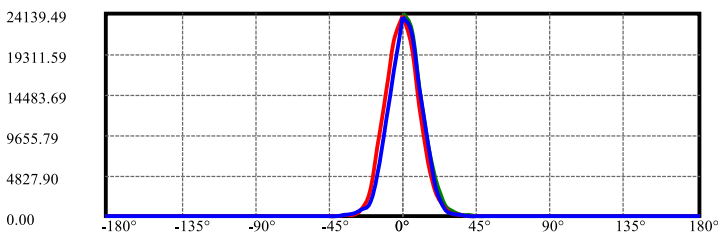
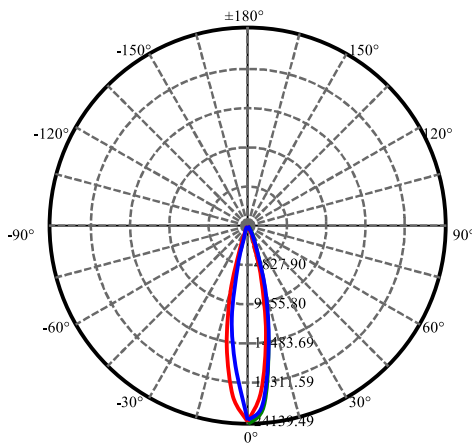
Zone	Lumens	%Lamp	%Fixt
0-30	4370.10	97.11%	95.86%
0-40	4460.41	99.12%	97.84%
0-60	4517.78	100.40%	99.10%
0-90	4537.94	100.84%	99.54%
0-120	4537.98	100.84%	99.54%
0-180	4558.87	101.31%	100.00%
60-90	29.54	0.66%	0.65%
90-120	0.24	0.01%	0.01%
90-130	0.34	0.01%	0.01%
90-150	3.24	0.07%	0.07%
90-180	20.15	0.45%	0.44%
0-18.88	3647.10	81.05%	80.00%

LUX DISTANCE CURVE (3000K)



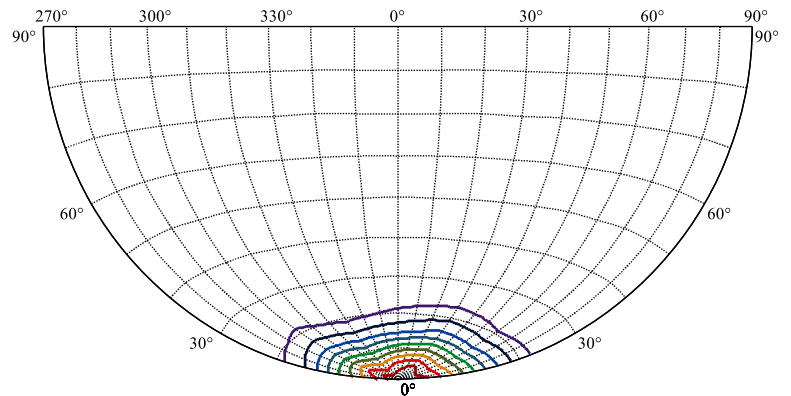
Max , Ave Beam angle of C30 plane 25.86

LUX DISTRIBUTION CURVE (3000K)



C30(Max): —  
 C0/C180: —  
 C90/C270: —

ISO CANDELA DIAGRAM (3000K)



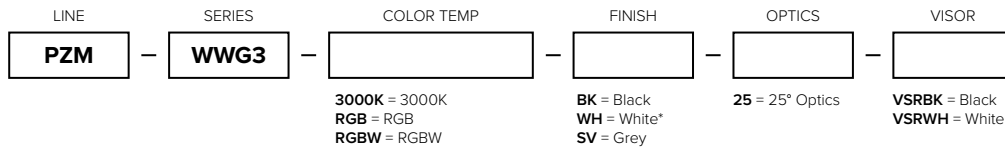
[Unit:cd]  
 I<sub>max</sub>:24139.49  
 (10%I<sub>max</sub>) 2413.95  
 (20%I<sub>max</sub>) 4827.9  
 (30%I<sub>max</sub>) 7241.85  
 (40%I<sub>max</sub>) 9655.79  
 (50%I<sub>max</sub>) 12069.7  
 (60%I<sub>max</sub>) 14483.7  
 (70%I<sub>max</sub>) 16897.6  
 (80%I<sub>max</sub>) 19311.6  
 (90%I<sub>max</sub>) 21725.5

## Accessory Information

ACCESSORY	ITEM NUMBER
POWER + SIGNAL SPLITTER FOR WALL WASHERS (15FT 6PIN LEAD, 3FT POWER BARE WIRE, 3FT DMX BARE WIRE)	<b>PZM-WW-PSL-15FT</b>
1FT POWER + SIGNAL LINKING CABLE (6PIN)	<b>PZM-WW-JUMP1-BK</b>
3FT POWER + SIGNAL LINKING CABLE (6PIN)	<b>PZM-WW-JUMP3-BK</b>
6FT POWER + SIGNAL LINKING CABLE (6PIN)	<b>PZM-WW-JUMP6-BK</b>
20FT POWER + SIGNAL LINKING CABLE (6PIN)	<b>PZM-WW-JUMP20-BK</b>
3FT SIGNAL EXTENSION FOR WALL WASHERS (6PIN TO BARE WIRE)	<b>PZM-WW-SIGEXTEND-BK</b>
XLR3 TO XLR5 ADAPTER (BAG OF 2)	<b>PZM-WW-XLR3-XLR5</b>
SIGNAL TERMINATION END FOR WALL WASHERS (6PIN)	<b>PZM-WW-SIGEND6PIN</b>
POLE CLAMP WITH SAFETY CABLE FOR WALL WASHERS	<b>PZM-WW-PCLMP</b>

## Special Order Information

Please allow 12-16 weeks for special order items



\*MOQs may apply.

## Control

DMX 512 Protocol  
 Requires RDM (Remote Device Management) to address each fixture. Each fixture is factory set to ID=001.

CCT	3000K	RGB	RGBW
Data Protocol	DMX512; RDM Required for address		
DMX Channel	3 Channels (5 Channels for Strobe) 3 Sets of 6 LEDs	9 Channels (11 Channels for Strobe) 3 Sets of 6 LEDs	12 Channels (14 Channels for Strobe) 3 Sets of 6 LEDs

## NOTES

---

---

---

---

---

---